

A Framework for Describing School Nursing Practice in the 21st Century

Erin D. Maughan PhD, MS, RN, APHN-BC.FAAN; Donna Mazyck MS, RN, NCSN; Nichole Bobo MSN, RN; Sarah Butler MSN, RN, CDE, NCSN & Shirley Schantz EdD, ARNP, RN

Background/Purpose

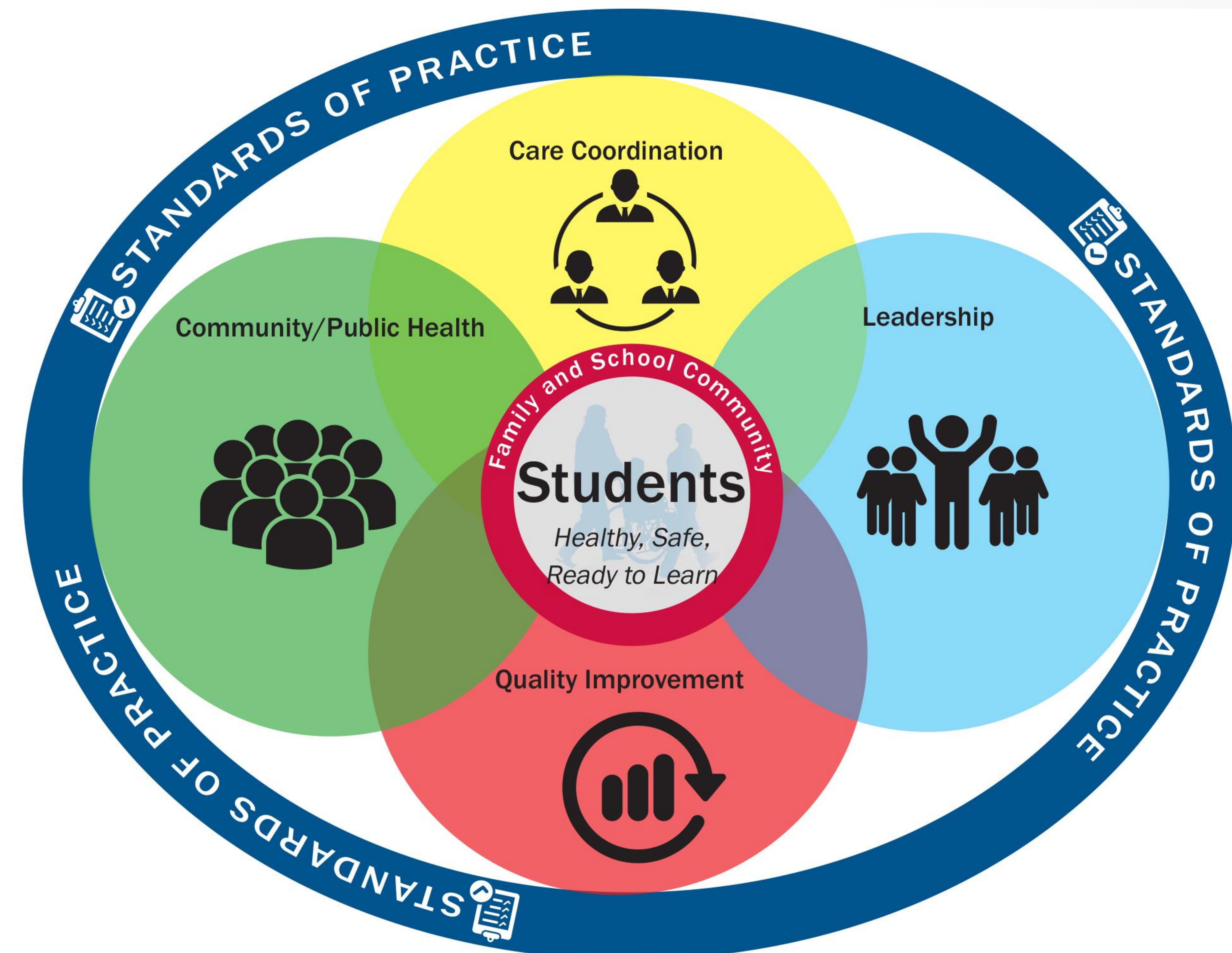
- Students' health needs have changed and increased over the years
- Framework needed to help school nurses understand and articulate their current role within context of whole school, whole community, whole child¹

Process

- NASN nursing staff reviewed literature and developed Framework
- Feedback from national survey, national conference and several local conferences used to revise Framework

Explanation

- Students at center, within the context of students' family and school community
- Four non-hierarchical, overlapping key principles of school nursing practice
- Surrounded by fifth principle, Standards of Practice, foundational for evidence-based, clinically competent, quality care



Standards of Practice	Care Coordination	Leadership	Quality Improvement	Community/Public Health
<ul style="list-style-type: none"> • Clinical Competence • Clinical Guidelines • Code of Ethics • Critical Thinking • Evidence-based Practice • NASN Position Statements • Nurse Practice Acts • Scope and Standards of Practice 	<ul style="list-style-type: none"> • Case Management • Chronic Disease Management • Collaborative Communication • Direct Care • Education • Interdisciplinary Teams • Motivational Interviewing/Counseling • Nursing Delegation • Student Care Plans • Student-centered Care • Student Self-empowerment • Transition Planning 	<ul style="list-style-type: none"> • Advocacy • Change Agents • Education Reform • Funding and Reimbursement • Healthcare Reform • Lifelong Learner • Models of Practice • Technology • Policy Development and Implementation • Professionalism • Systems-level Leadership 	<ul style="list-style-type: none"> • Continuous Quality Improvement • Documentation/Data Collection • Evaluation • Meaningful Health/Academic Outcomes • Performance Appraisal • Research • Uniform Data Set 	<ul style="list-style-type: none"> • Access to Care • Cultural Competency • Disease Prevention • Environmental Health • Health Education • Health Equity • Healthy People 2020 • Health Promotion • Outreach • Population-based Care • Risk Reduction • Screenings/Referral/Follow-up • Social Determinants of Health • Surveillance

Use of Framework

- Guide to prioritize school nursing practice
- Tool to articulate to public health, student nurses, and educators the many aspects of school nursing practice

Reference

¹ASCD & CDC. (2014). Whole school whole community whole child: A collaborative approach to learning and health. Retrieved from <http://www.ascd.org/ASCD/pdf/siteASCD/publications/wholechild/wsc-a-collaborative-approach.pdf>.

Questions? emaughan@nasn.org

Acknowledgement: Sally Schoessler MEd, BSN for her work on first draft of framework